



Study of Noise Level in Residential Zone and Silence Zone of Jabalpur City

Pramila Patel

*M.Tech. Research Scholar
Shri Ram Group of Institutions
Jabalpur, (M.P.) [INDIA]
Email: patel26041992@gmail.com*

Charan Singh Thakur

*Head of the Department
Department of Civil Engineering
Shri Ram Group of Institutions
Jabalpur, (M.P.) [INDIA]
Email: thakurcharansingh@gmail.com*

Abstract—Noise pollution is recognized as a major problem for the quality of life in urban area all over the world. Increasing industrialization, urbanization, and commercialization of urban area increase the noise pollution. Traffic is the dominating source of noise. Noise pollution is considered as environmental stressor which now becomes a problem of all over the world especially in developing countries like India. Noise as pollutant produce contaminated environment that become a nuisance and affect the health of a person, his activities and mental abilities. Today one of the major environmental pollution due to anthropogenic activities is noise pollution.

Jabalpur city (Union Territory) is second biggest city of Madhya Pradesh having population of 12.81 lakhs and selected in first round of smart city mission under the government of India. The rapid growth and development of city in terms of industrialization, Increase of traffic and urbanization causing increasing trends of noise level. The present study is concerned with assessment of ambient noise level in different zone of Jabalpur city in May 2017. Noise level study was conducted at 10 different locations in three different zones (commercial zone, silence zone) of Jabalpur and recorded noise data are interpreted in form of parameter Leq , $L10$, $L50$, $L90$, LNP .

The Leq Value in different hours of different location compared with prescribed standard of central pollution Control Board (CPCB) and it was observed that in all the study area sound level is much above the maximum permissible limit in per at hour. This study reveals different area of Jabalpur city is highly exposed to noise pollution and there is a need to adopt suitable control measure for reduction of noise.

Keywords:—Noise Pollution, Sound Level Meter, Noise Parameter, Residential Zone, Silence Zone, Jabalpur city

1. INTRODUCTION

Sound is atmospheric or airborne vibration perceptible to ear. Noise is usually unwanted, unpleasant or disagreeable sound that causes uneasiness. Noise is a form of pollution because it can cause several physiological and psychological effects on human being. According to W.H.O (World Health Organization) noise pollution is now a day the third most hazardous environmental type of pollution preceding only by air and water pollution. Migration of people from rural to urban area, extension of urban communities, infrastructure development, population growth and urbanization are important factors bringing about motorization and resulting increment in level of different urban contamination. In India noise pollution in urban centre is gradually

increases over the years. According to past survey urban centre in India have revealed that noise level are much higher than the prescribed standards. This resulted that proportion of people exposed to noise is greatly increased and has direct and indirect affect to the people that can lead to the health hazard. Some of the major health hazard causes by excessive exposure to noise are auditory damage, blood pressure, headache, migraine, increase anger, insomnia, fatigue, high blood pressure, high pulse rate, grater perspiration etc.

Noise is term used for any unwanted sound, thus it is a subjective term and varies from person to person. Particular loudness may not be liked by one person, whereas the same loudness may be quite pleasant to another person. Increasing industrialization, urbanization, and commercialization of urban area increase the noise pollution. Traffic is the dominating source of noise. The effect of noise on human health are physical effect such as hearing effect, Physiological effect such as increased blood pressure, irregularity of heart rhythms, Psychological effect such as sleeplessness, going to sleep late, Irritability annoyance and stress. The government of India has introduced the noise pollution (regulation and control) Rule 2000 for the noise producing and generating source which clearly classifies our environment in to four categories and specifies the allowable limit of noise separately for day and night time for different urban environments.

In India Noise pollution studies were carried out for various cities. Vijay Sharma, Pankaj Saini, Sudhanshu kaushik and B D Joshi 2010 [13] studied noise level of different zone of Haridwar city uttarakhand state during working day and non working day noise level of selected within city is higher during working day as compared to non working day except residential zone.

2. STUDY AREA

The Jabalpur city is located between latitude 23°10'N and longitude 79°56'E in Central part of India. The city is spread over 53

sqkm area and inhabited by the population of 10.81 lakh. Jabalpur is contributing in country's defence by having Gun Carriage Factory, Ordnance Factory Khamaria, Vehicle Factory, 506 army base workshop and central ordnance depot. Jabalpur is zonal headquarter of WCR and also two national highway NH-7, NH-12 pass through Jabalpur. Jabalpur situated on bank of river Narmada. The habitation in Jabalpur is highly diversified. Beside the general requirement of calamity in some of the areas are highly noisy whereas some areas are reasonably calm. To study the intensity of noise pollution in residential and silence zone of Jabalpur city monitoring of noise level will be conducted as per guideline of the central pollution control board (CPCB) India. Total 10 location identified prior to monitoring that are listed below

Table -1: List of location which have to survey

Zone	Location
Residential Zone	1. Vijay Nagar
	2. Adhartal Area
	3. Hathital Colony
	4. Wright Town
	5. Civil Line Area
Silence Zone	6. Victoria Hospital
	7. RDVV University
	8. High Court Avenue
	9. Jabalpur Engineering College
	10. Bhavartal Garden

3. METHODOLOGY

Sound level will be measured by following standard procedure prescribed by CPCB using calibrated sound level meter Lurton SL-4023SD with measuring range from 30-180 dB(A) between 8am to 9pm during working day. Standard noise level for different location during day and night time is followed according to CPCB guideline. our monitoring period comprise of 13 hr of day time (i.e.8 am to 9 am, 9 am to10 am, 10 am to 11 am, 11 am to 12 pm, 12 pm to 1 pm, 2 pm to 3 pm, 3 pm

to 4 pm, 4 pm to 5 pm, 5 pm to 6 pm, 6 pm to 7 pm, 7 pm to 8 pm, 8 pm to 9 pm) and 1 hr night time. The reading will be taken at concern hours for 10 minute duration at fixed interval of 10 seconds so 60 reading are taken for each observation hours. Ambient sound levels are being compared with prescribed standards of CPCB (Central Pollution Control Board) India. The national ambient air quality standard in respect of noise as specified under the noise pollution (regulation and control) rule 2000 is referred for present study. Various noise descriptors such as L_{eq} , L_{10} , L_{50} , L_{90} , L_{NP} , has been evaluated to reveal the extent of noise pollution.

L_{eq} - It is energy mean of the noise level over a specified period.

L_{10} - indicate respectively the level exceeded for 10% of time in a recorded noise level for a given interval.

L_{50} - indicate respectively the level exceeded for 50% of time in a recorded noise level for a given interval.

L_{90} - indicate respectively the level exceeded for 90% of time in a recorded noise level for a given interval.

L_{NP} - Noise pollution level $L_{NP} = L_{eq} + (L_{10} - L_{90})$

The noise levels were calculated in (L_{NP}) using the following formula.

Table 2: The Ambient Air Quality Standards in respect of Noise given by CPCB

Area	Category of Area / Zone	Limits in dB(A) *	
		Day Time	Night Time
(A)	Residential Area	55	45
(B)	Silence Zone	50	40

Note: -

1. Day time shall mean from 6.00 a.m. to 10.00 p.m.

2. Night time shall mean from 10.00 p.m. to 6.00 a.m.
3. Silence zone is an area comprising not less than 100 meters around hospitals, educational institutions, courts, religious places or any other area which is declared as such by the competent authority.
4. Mixed categories of areas may be declared as one of the four above mentioned categories by the competent authority.

* dB(A) L_{eq} denotes the time weighted average of the level of sound in decibels on scale A which is relatable to human hearing.

“A”, in dB(A) L_{eq} , denotes the frequency weighting in the measurement of noise and corresponds to frequency response characteristics of the human ear.

4. OBSERVATIONS AND DISCUSSION

The study is conducted over 10 important station which are located in different parts of jabapur city. Table: 3 and Table: 4 show different noise parameter in day and night time of all Residential and silence area respectively. Residential area includes Vijay Nagar, Adhartal Area, Hathital Colony, Wright Town, Civil Line Area and Silence Area included Victoria Hospital, RDVV Campus, Highcourt Avenue, Jabalpur Engineering College Campus, Bhavartal Garden.

The equivalent noise levels (L_{eq}) in different residential area of Jabalpur city have been shown in table-3 and Fig 1-5. Minimum and Maximum Equivalent sound pressure level ranges between 53.0 dB(A) to 72.6 dB(A). Equivalent Noise level in all the residential area exceeded the standard value of 55 dB(A) during daytime and 45 dB(A) during night time. Wright Town area is found to have the maximum Equivalent Noise level 72.6 dB(A) during day time (5-6 pm). Maximum equivalent noise level observed in day time at Vijay Nagar, Adhartal Area, Hathital Colony, Wright Town and Civil Line are 70.3 dB(A),

63.0 dB(A) 71.1 dB(A),72.6 dB(A) and 70.8 dB(A) respectively. Maximum equivalent noise level observed in night time at Vijay Nagar, Adhartal Area, Hathital Colony, Wright Town and Civil Line are 61.1 dB(A), 53.0 dB (A) 53.8 dB(A),55.5dB(A) and 59.1 dB(A) respectively. The main reasons of noise in residential area are traffic movement and vehicular horn, household equipment and appliances and construction work.

In silence area as shown in table-4 and Figure 6-10 Minimum and Maximum Equivalent sound pressure level ranges between 48.2 dB(A) to 76.5 dB(A). Equivalent Noise level in all the silence area much above the standard value of 50 dB (A) during day time and 40 dB(A) during night time. Maximum equivalent noise level observed in day time at Victoria Hospital, RDVV Campus, High court Avenue, Jabalpur Engineering College Campus, Bhavartal Garden are 64.5 dB(A), 59.8 dB(A) 76.5 dB(A), 65.3 dB(A) and 65.4 dB(A) respectively. Maximum equivalent noise level observed in night time at Victoria Hospital, RDVV Campus, High court Avenue, Jabalpur Engineering College Campus, Bhavartal Garden are 52.4 dB(A), 48.2 dB(A) 70.9 dB 55.6dB(A) and 54.8 dB (A) respectively. Thus it is seen noise pollution is exceeded permissible limit at each location during day and night time. The high court avenue found to be highly noise polluted.

Table 3; Noise parameters (L_{eq} , L_{10} , L_{50} , L_{90} , and L_{NP}) at different monitored location of Residential zone at different time interval.

RESIDENTIAL ZONE					
Date : 02/02/2018	VIJAY NAGAR				
TIME	L_{eq}	L_{10}	L_{50}	L_{90}	L_{NP}
8AM-9AM	61.2	62.4	61.3	58.8	64.8
9AM-10AM	68.0	69.5	67.9	65.8	71.7
10AM-11AM	66.5	69.8	65.8	63.0	73.3
11AM-12PM	64.7	67.0	63.9	62.4	69.3
12PM-01PM	65.3	67.4	65.3	62.8	69.9
02PM-03PM	61.7	63.7	61.3	59.1	66.3
03PM-04PM	61.4	63.0	61.3	59.3	65.1
04PM-05PM	63.1	65.4	63.0	60.4	68.1
05PM-06PM	65.1	67.0	64.4	63.0	69.1
06PM-07PM	66.6	68.3	66.8	63.8	71.1
07PM-08PM	62.0	63.7	62.0	59.4	66.3
08PM-09PM	63.2	64.9	62.1	60.2	67.9

Date: 05/02/2018	ADHARTAL				
TIME	L_{eq}	L_{10}	L_{50}	L_{90}	L_{NP}
8AM-9AM	59.6	62.5	56.6	55.8	66.3
9AM-10AM	61.3	62.4	59.1	56.6	67.1
10AM-11AM	57.6	58.2	56.3	55.9	59.9
11AM-12PM	60.2	62.3	59.2	56.4	66.1
12PM-01PM	61.5	63.4	58.2	56.6	68.3
02PM-03PM	60.8	61.3	58.9	57.5	64.6
03PM-04PM	60.5	60.9	58.2	56.2	65.2
04PM-05PM	61.2	61.9	59.2	58.7	64.4
05PM-06PM	60.5	61.5	59.8	56.3	65.7
06PM-07PM	61.1	62.8	60.3	56.7	68.0
07PM-08PM	63.5	66.5	62.3	58.2	71.8
08PM-09PM	64.3	66.4	62.5	59.6	71.1

Date : 07/02/2018	HATITHAL COLONY				
TIME	L_{eq}	L_{10}	L_{50}	L_{90}	L_{NP}
8AM-9AM	66.3	65.9	62.3	56.2	76.0
9AM-10AM	69.5	72.3	65.4	60.7	81.1
10AM-11AM	72.3	71.8	69.3	66.5	77.6
11AM-12PM	70.2	72.6	68.1	64.9	77.9
12PM-01PM	71.3	72.6	67.5	62.4	81.5
02PM-03PM	61.3	63.5	57.4	52.3	72.5
03PM-04PM	62.3	65.4	61.9	56.8	70.9
04PM-05PM	66.5	67.8	64.2	58.4	75.9
05PM-06PM	67.4	67.4	64.2	58.9	76.0
06PM-07PM	70.2	71.6	66.5	63.8	78.0
07PM-08PM	68.2	70.6	66.9	64.8	74.0
08PM-09PM	70.8	72.1	65.7	58.5	84.4

Date: 09/02/2018	WRIGHTTOWN				
TIME	L_{eq}	L_{10}	L_{50}	L_{90}	L_{NP}
8AM-9AM	60.5	63.5	59.8	56.2	67.8
9AM-10AM	67.8	68.9	64.5	62.8	73.9
10AM-11AM	73.5	77.8	67.1	62.9	88.4
11AM-12PM	67.8	70.2	64.2	61.9	76.1
12PM-01PM	68.9	71.5	65.8	62.7	77.6
02PM-03PM	64.8	62.8	60.3	59.4	68.2
03PM-04PM	67.5	67.9	65.2	60.8	74.8
04PM-05PM	67.2	68.2	65.4	65.9	69.5
05PM-06PM	73.5	69.4	65.2	63.0	79.9
06PM-07PM	69.2	71.5	68.9	63.7	77.0
07PM-08PM	71.3	74.5	69.5	63.4	82.4
08PM-09PM	72.1	70.4	67.8	63.5	79.0

Date : 16/02/2018	CIVIL LINE AREA				
TIME	L_{eq}	L_{10}	L_{50}	L_{90}	L_{NP}
8AM-9AM	60.2	64.4	60.2	57.0	67.6
9AM-10AM	64.3	66.0	65.8	59.2	71.1
10AM-11AM	66.4	69.2	65.8	62.8	72.8
11AM-12PM	71.2	71.5	64.8	62.0	80.7
12PM-01PM	71.2	70.4	65.9	61.8	79.8
02PM-03PM	65.8	63.4	62.8	54.9	74.3
03PM-04PM	66.8	68.4	63.5	60.7	74.5
04PM-05PM	66.9	68.7	68.7	59.2	76.4
05PM-06PM	70.2	74.5	67.9	62.8	81.9
06PM-07PM	69.8	70.2	68.7	65.2	74.8
07PM-08PM	69.3	72.8	68.1	58.4	83.7
08PM-09PM	69.0	72.1	68.3	65.8	75.3

VIJAY NAGAR

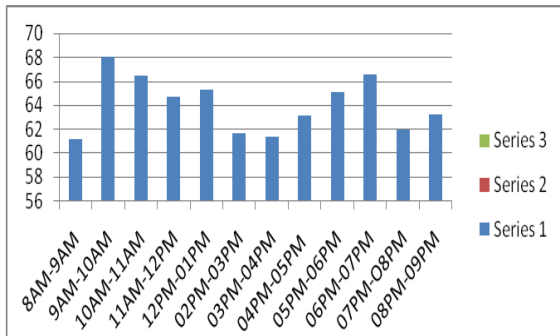


Figure 1: Temporal distribution of equivalent noise level Leq dB near Vijay Nagar

CIVIL LINE AREA

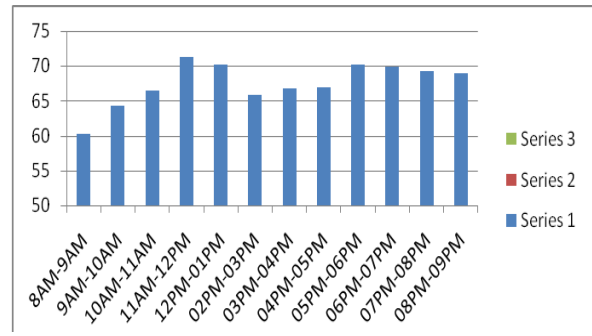


Figure 5: Temporal distribution of equivalent noise level Leq dB near Civil Line Area

ADHARTAL

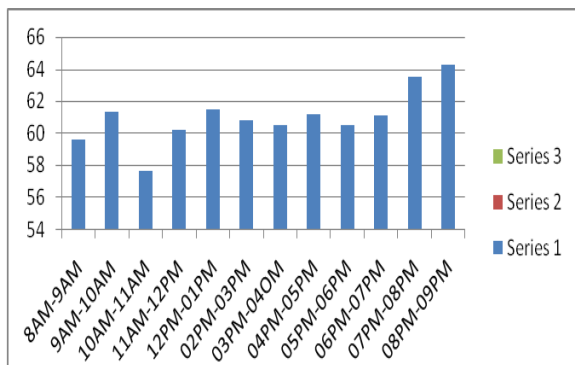


Figure 2: Temporal distribution of equivalent noise level Leq dB near Adhartal Area

VICTORIA HOSPITAL

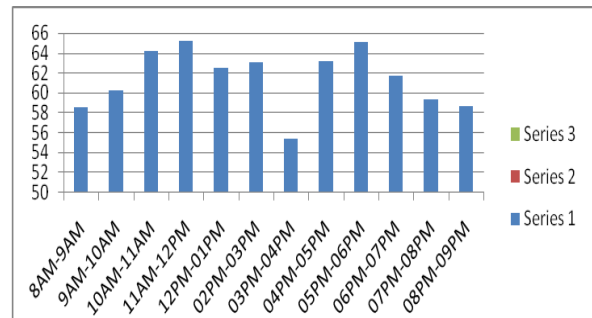


Figure 6: Temporal distribution of equivalent noise level Leq dB near Victoria Hospital

HATHITAL COLONY

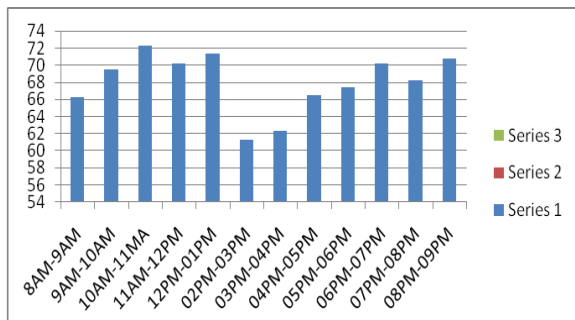


Figure 3: Temporal distribution of equivalent noise level Leq dB near Hathital colony

RDVV CAMPUS

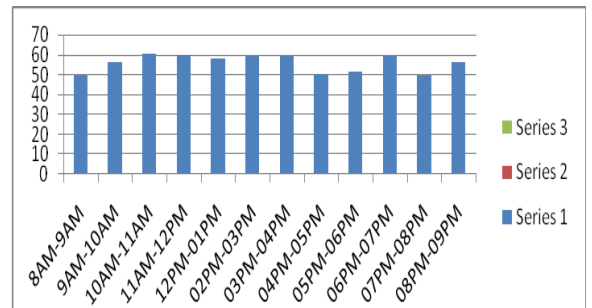


Figure 7: Temporal distribution of equivalent noise level Leq dB near RDVV Campus

WRIGHT TOWN

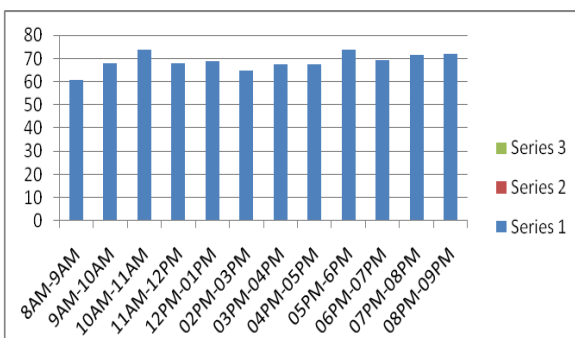


Figure 4: Temporal distribution of equivalent noise level Leq dB near Wright Town

HIGH COURT

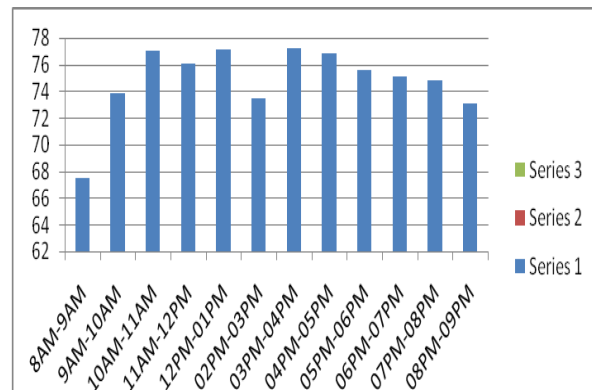


Figure 8: Temporal distribution of equivalent noise level Leq dB near High Court

JEC

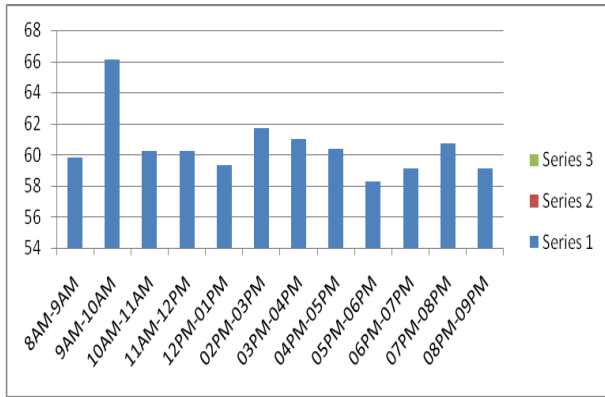


Figure 9: Temporal distribution of equivalent noise level L_{eq} dB JEC

BHAWARTAL GARDAN

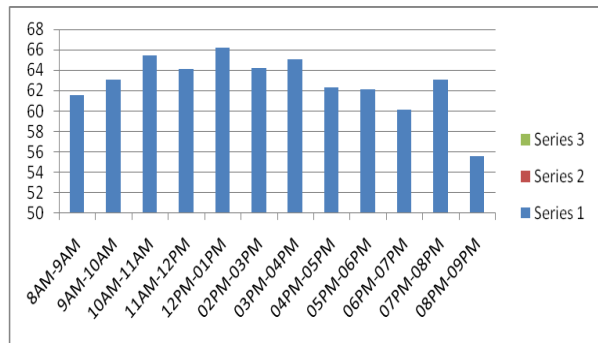


Figure 10: Temporal distribution of equivalent noise level L_{eq} dB Bhavartal Garden

Table 4; Noise parameters (L_{eq} , L_{10} , L_{50} , L_{90} , and L_{NP}) at different monitored location of Residential zone at different time interval.

SILENCE ZONE

Date : 07/03/2018	VICTORIA HOSPITAL				
TIME	L_{eq}	L_{10}	L_{50}	L_{90}	L_{NP}
8AM-9AM	58.5	57.6	56.2	59.8	56.3
9AM-10AM	60.2	61.1	58.6	56.9	64.4
10AM-11AM	64.2	66.5	62.5	59.0	71.7
11AM-12PM	65.2	66.9	64.2	59.0	73.1
12PM-01PM	62.5	66.3	58.2	58.1	70.7
02PM-03PM	63.1	65.2	61.8	58.7	69.6
03PM-04PM	55.3	58.4	56.1	52.9	60.8
04PM-05PM	63.2	63.5	59.1	56.8	69.9
05PM-06PM	65.1	65.9	65.8	64.8	66.2
06PM-07PM	61.7	62.8	63.7	60.4	64.1
07PM-08PM	59.3	62.5	56.8	48.6	73.2
08PM-09PM	58.6	60.4	56.8	48.2	70.8

Date: 12/03/2018	RDVV CAMPUS				
TIME	L_{eq}	L_{10}	L_{50}	L_{90}	L_{NP}
8AM-9AM	49.7	47.9	46.3	45.8	51.8
9AM-10AM	56.2	60.0	64.1	49.1	67.1
10AM-11AM	60.2	62.4	56.9	56.1	66.2
11AM-12PM	59.7	61.8	57.1	53.8	67.9
12PM-01PM	58.1	61.2	55.3	53.7	65.6
02PM-03PM	59.4	60.2	58.1	54.1	65.5
03PM-04PM	49.1	51.3	48.1	47.4	53.0
04PM-05PM	50.1	53.0	49.7	47.1	56.0
05PM-06PM	51.6	53.4	49.6	46.1	63.9
06PM-07PM	49.1	50.1	49.7	45.3	53.9
07PM-08PM	49.9	50.6	47.1	45.8	54.7
08PM-09PM	56.1	60.2	52.8	50.7	65.6

Date : 15/03/2018	HIGH COURT AVENUE				
TIME	L_{eq}	L_{10}	L_{50}	L_{90}	L_{NP}
8AM-9AM	67.5	71.0	68.3	63.1	75.4
9AM-10AM	73.9	75.9	74.5	71.0	78.8
10AM-11AM	77.0	79.0	72.8	68.0	88.0
11AM-12PM	76.1	78.6	75.2	73.1	81.6
12PM-01PM	77.1	78.9	76.8	73.1	82.9
02PM-03PM	73.5	75.1	72.8	70.0	78.6
03PM-04PM	77.2	78.8	76.1	72.5	83.5
04PM-05PM	76.8	78.1	75.1	70.5	84.4
05PM-06PM	75.6	76.3	74.0	72.5	79.4
06PM-07PM	75.1	76.6	75.8	74.5	77.2
07PM-08PM	74.8	82.1	75.2	72.3	84.6
08PM-09PM	73.1	72.5	69.8	68.1	77.5

Date: 19/03/2018	JEC CAMPUS				
TIME	L_{eq}	L_{10}	L_{50}	L_{90}	L_{NP}
8AM-9AM	59.8	61.5	58.3	56.7	64.6
9AM-10AM	66.1	63.8	62.4	58.1	71.9
10AM-11AM	60.2	61.5	58.7	56.7	65.0
11AM-12PM	60.2	61.8	61.7	58.1	63.9
12PM-01PM	59.3	61.0	59.1	67.8	52.5
02PM-03PM	61.7	62.3	59.1	67.5	56.5
03PM-04PM	61.0	62.3	65.0	56.3	65.9
04PM-05PM	60.4	60.1	56.9	55.2	65.3
05PM-06PM	58.3	60.1	58.3	56.4	62.0
06PM-07PM	59.1	61.7	57.9	56.9	63.9
07PM-08PM	60.7	61.2	58.9	57.1	64.8
08PM-09PM	59.1	60.4	57.8	59.1	60.4

Date : 22/03/2018	BHAWARTAL GARDAN				
TIME	L_{eq}	L_{10}	L_{50}	L_{90}	L_{NP}
8AM-9AM	61.6	58.1	56.1	53.6	66.2
9AM-10AM	63.1	64.5	63.1	57.8	69.8
10AM-11AM	65.4	66.5	65.2	61.0	70.9
11AM-12PM	64.1	65.5	64.2	62.2	67.4
12PM-01PM	66.2	66.4	66.1	63.8	68.8
02PM-03PM	64.2	65.1	64.8	61.8	67.5
03PM-04PM	65.1	67.5	64.3	60.9	71.7
04PM-05PM	62.3	63.1	60.5	59.3	66.1
05PM-06PM	62.1	65.2	60.4	59.1	68.2
06PM-07PM	60.1	62.8	61.4	60.7	62.2
07PM-08PM	63.1	63.9	62.5	61.9	65.1
08PM-09PM	55.6	57.6	54.3	50.1	63.1

5. RESULT DISCUSSION

Residential area

In Residential area shown in table-1 and Figure 1 to Figure 5 Minimum and Maximum Equivalent sound pressure level between 57.6 dB to 73.5 dB Equivalent Noise level in all the residential area exceeded the standard value of 55 dB during daytime and 45 dB during night time.

Wright town area is found to have the maximum Equivalent Noise level 73.5 dB during day time (5-6 pm). Maximum equivalent Noise level observed in day time at Vijay Nagar, Adhartal Area, Hathital Colony, Wright Town and Civil Line are 68.0 dB, 61.5 dB, 72.3 dB, 73.5 dB and 71.5 dB respectively. Maximum equivalent noise level observed in night time at Vijay Nagar, Adhartal Area, Hathital Colony, Wright Town and Civil Line are 66.6 dB, 64.3 dB, 70.8 dB, 62.1 dB and 69.8 dB respectively. The main reasons of noise in residential area traffic movement at vehicles horn, household equipment and construction work.

Silence area

In Silence area as shown in table 5.2 and Fig 6-10 and 5.12 Minimum and Maximum Equivalent sound pressure level ranges between 49.1 dB to 77.2 dB. Equivalent Noise level in all the silence area much have above the standard value of 50 dB, during day time and 40 dB during night time. maximum equivalent noise level observed in day time at Victoria hospital, RDVV Campus, High court, JEC Cumpas Bhavartal Garden are 65.2 dB, 60.2 dB, 77.2 dB, 61.7 dB and 66.2 dB. respectively. Maximum equivalent noise level observed in night time at Victoria hospital, RDVV Campus, High court, JEC Campus Bhavartal Garden are 61.7 dB, 56.1 dB, 65.1 dB, 60.7 dB, and 63.1 dB. respectively. Thus it is seen noise pollution is exceeded permissible limit at each location during day and night time. The High court Bhavartal garden and Victoria hospital found to be highly noise polluted.

6. CONCLUSION

The investigation reveal that the Jabalpur city are highly exposed to noise pollution. Rapid urbanization and heavy traffic flow and vehicle horn are the main reason that poses noise pollution in the town. Hence to keep the noise level with in the acceptable limit the following noise control measure should be followed.

1. Movement of vehicles on the inner arterial roads should be restricted.
2. The vehicles should not generate noise more that limit prescribed by the Regulatory Authorities.
3. Heavy vehicles movement near residential and silence area should be rusticated.
4. The noisiest three wheeler tempo should be banned.
5. There should be restriction on the use of horn by vehicles passing by the residential area.
6. Commercial activities should not be permitted in residential area and silence area.
7. Houses should not be preferable located near the main road. Attention should be given to the architectural layout of residential localities so as to reduce the travel of noise from one house to another.
8. There should be plenty of trees and bushes in open space between houses and roads.
9. Use of loud speaker should be reduced.
10. Playing of noise generating devices in houses should be preferable low volume.

11. Diesel generator sets and pumps used in multi-storeyed buildings should have proper noise.
12. Houses should be located far away from the roads.

Noise at receiver end can be controlled by adopting hearing protector. The prime function of ear protector is to reduce the noise level at the wearer's ears to within safe limits. The uses of ear plugs ear muffs are necessary. Attention must be given to hygiene discomfort and other medical problems that may arise through their use. Noise control can also be done by treatment of noise path. In this some barriers are placed in between the source and receiver. Use of sound absorbent in ordinary buildings should also be encouraged. Appropriate planning of city, sufficient road facilities for easy movement of traffic, reduce vehicular movement, proper maintenance of road and vehicle, street side noise barriers and plantation will be solution of such type noise pollution. People Corporation, participation and awareness in the matter of environment, Eco-city planning and application of laws effectively may play important role in prevention and control of noise. Necessary preventive measures must be taken by the appropriate authority to implement the Noise pollution (Regulation and Control) Rules 2000 in time bound manner. professionals, such as town planners, architect, and environmental engineers should have the problem of environmental noise pollution in mind when setting new roads, shopping centre, schools, hospitals, and houses.

Preparation of noise maps for city is the one of most valuable step to decrease noise pollution in Jabalpur. Noise maps are very powerful tools for communicating result of assessment of environmental noise to the general public and for the government (local and national) to devise noise correction measure. The noise map itself, with the values of descriptors, provides baseline data for planner, engineers and other professional and researcher for the planning and execution of their projects.

At last it can be concluded that this issue can be resolved if people become aware of long term ill effects of noise pollution.

As it is a short term assessment of noise pollution problems in the town, further study may also be required to address the effect of noise pollution in the Jabalpur city.

REFERENCES:

- [1] Chauhan A., Pawar M., Kumar D., Kumar N. and Kumar R., (2010). Assessment of Noise Level Status in Different Areas of Moradabad City. Report and Opinion. 2010;2(5): 59-61.
- [2] Manish Raman and R C Chhipa (2014). Study of Noise Pollution at Intersections in Jaipur city. International Journal of Engineering Science & Research Technology 3(8) August, 2014
- [3] Okeke, P.N and George, D.M.C (2015). Evaluation of Ambient Noise Levels in Port Harcourt Metropolis, South-South, Nigeria. IOSR Journal of Environmental Science, Toxicology and Food Technology (IOSR-JESTFT) e-ISSN: 2319-2402,p- ISSN: 2319-2399. Volume 9, Issue 7 Ver. I (July. 2015), PP 54-60.
- [4] Garg S. K. and Garg R., (2010). Environmental Engineering (Vol. II) - Sewage Disposal and Air Pollution Engineering. Hanna Publishers.
- [5] N.U. Singh and D. Shinde, Study of Noise Pollution Levels during a Hindu Festival in Dhar Town, MP, India, Res. J. Che. Sci., Vol.3(12), pp. 71-75, December 2013.